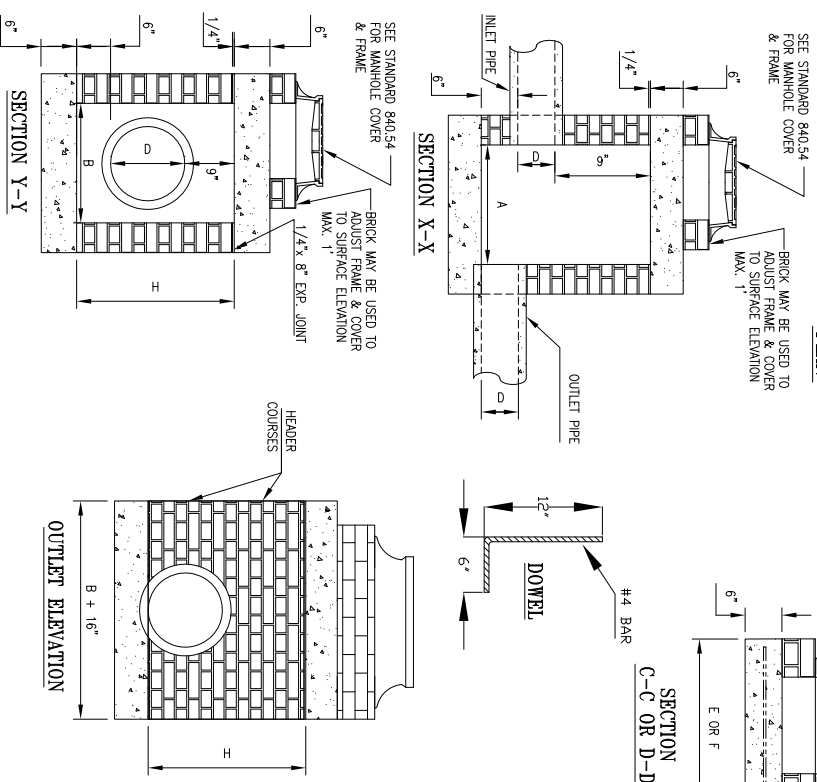


GENERAL NOTES:

- ALL EXPOSED CORNERS TO BE CHAMFERED 1".
- CLASS "B" CONCRETE TO BE USED.
- MORTAR JOINTS 1/2" ± 1/8" THICK.
- ALL EXPOSED JOINTS SHALL BE CONCAVE TOOLED.
- FORMS ARE TO BE USED FOR THE CONSTRUCTION OF THE BOTTOM SLAB.
- JUMBO BRICK WILL BE PERMITTED. CONCRETE BRICK OR 4" SOLID CONCRETE BLOCKS MAY BE USED IN LIEU OF CLAY BRICK.
- FOR 8'-0" IN HEIGHT OR LESS, USE 8" WALL OVER 8'-0" IN HEIGHT, USE 12" WALL TO 6'-0" FROM TOP OF WALL AND 8" WALL FOR THE REMAINING 6'-0". DIMENSIONS AND QUANTITIES TO BE ADJUSTED ACCORDINGLY.
- IF REINFORCED CONCRETE PIPE IS SET IN BASE SLAB OF BOX, ADD TO BASE AS SHOWN ON STANDARD NO. 840.00.
- ALL JUNCTION BOXES OVER 3'-6" IN DEPTH SHALL BE PROVIDED WITH STEPS 1'-2" ON CENTERS. STEPS SHALL BE IN ACCORDANCE WITH STD. NO. 840.06.
- ADJUST THE STEEL, CONCRETE AND BRICK MASONRY QUANTITIES TO INCLUDE THE ADDITION OF THE MANHOLE (I.E. DIAGONAL BARS SHORTENED AROUND OPENING IN TOP SLAB ADDITIONAL VARIABLE HEIGHT BRICK MASONRY, OPENING IN TOP SLAB).



DIMENSIONS AND QUANTITIES FOR BRICK JUNCTION BOXES

| DIM'S OF BOX & PIPE | PIPE SPAN | WIDTH | HEIGHT | REINFORCEMENT BARS | NO. | LENGTH | COVER | | CUBIC YARDS | | DEDUCTIONS FOR ONE PIPE CU. YDS. | | |
|---------------------|-----------|--------|--------|--------------------|-----|--------|--------|--------|-------------|-------|----------------------------------|-------|-------|
| | | | | | | | D | F | CONC. | BRICK | WALL PER FT. HT. CU. YD. | C.S. | R.C. |
| 15" | 2'-0" | 2'-0" | 2'-6" | 12 | 3 | 1'-1" | 3'-4" | 3'-4" | 0.412 | 0.657 | 0.263 | 0.031 | 0.047 |
| 18" | 2'-4" | 2'-4" | 2'-9" | 14 | 3 | 5" | 3'-8" | 3'-8" | 0.498 | 0.814 | 0.296 | 0.044 | 0.065 |
| 24" | 3'-0" | 3'-0" | 3'-3" | 16 | 4 | 1'-1" | 4'-4" | 4'-4" | 0.695 | 1.176 | 0.362 | 0.078 | 0.113 |
| 30" | 3'-4" | 3'-4" | 3'-9" | 16 | 4 | 5" | 4'-8" | 4'-8" | 0.807 | 1.481 | 0.395 | 0.122 | 0.170 |
| 36" | 4'-0" | 4'-0" | 4'-3" | 20 | 5 | 1'-1" | 5'-4" | 5'-4" | 1.053 | 1.959 | 0.461 | 0.176 | 0.238 |
| 42" | 4'-8" | 4'-8" | 4'-9" | 22 | 5 | 5" | 6'-0" | 6'-0" | 1.333 | 2.503 | 0.527 | 0.240 | 0.323 |
| 48" | 5'-4" | 5'-4" | 5'-3" | 26 | 6 | 5" | 6'-8" | 6'-8" | 1.646 | 2.940 | 0.560 | 0.313 | 0.422 |
| 54" | 5'-10" | 5'-10" | 5'-9" | 28 | 6 | 11" | 7'-2" | 7'-2" | 1.902 | 3.502 | 0.609 | 0.396 | 0.535 |
| 60" | 6'-6" | 6'-6" | 6'-3" | 30 | 7 | 7" | 7'-10" | 7'-10" | 2.272 | 4.113 | 0.658 | 0.489 | 0.650 |
| 66" | 7'-1" | 7'-1" | 6'-9" | 32 | 8 | 2" | 8'-5" | 8'-5" | 2.624 | 4.778 | 0.708 | 0.591 | 0.798 |

**STANDARD BRICK JUNCTION BOX
(OPTIONAL MANHOLE) 12" THRU 66" PIPE
ADOPTED FROM NCDOT STANDARD
NO. 840.32**

STANDARD BRICK JUNCTION BOX (OPTIONAL MANHOLE) 15" thru 66" PIPE

STORM DRAINAGE

Detail SW-5

DETAIL NOT TO SCALE



Town of Hope Mills, North Carolina

February 28, 2015 Original