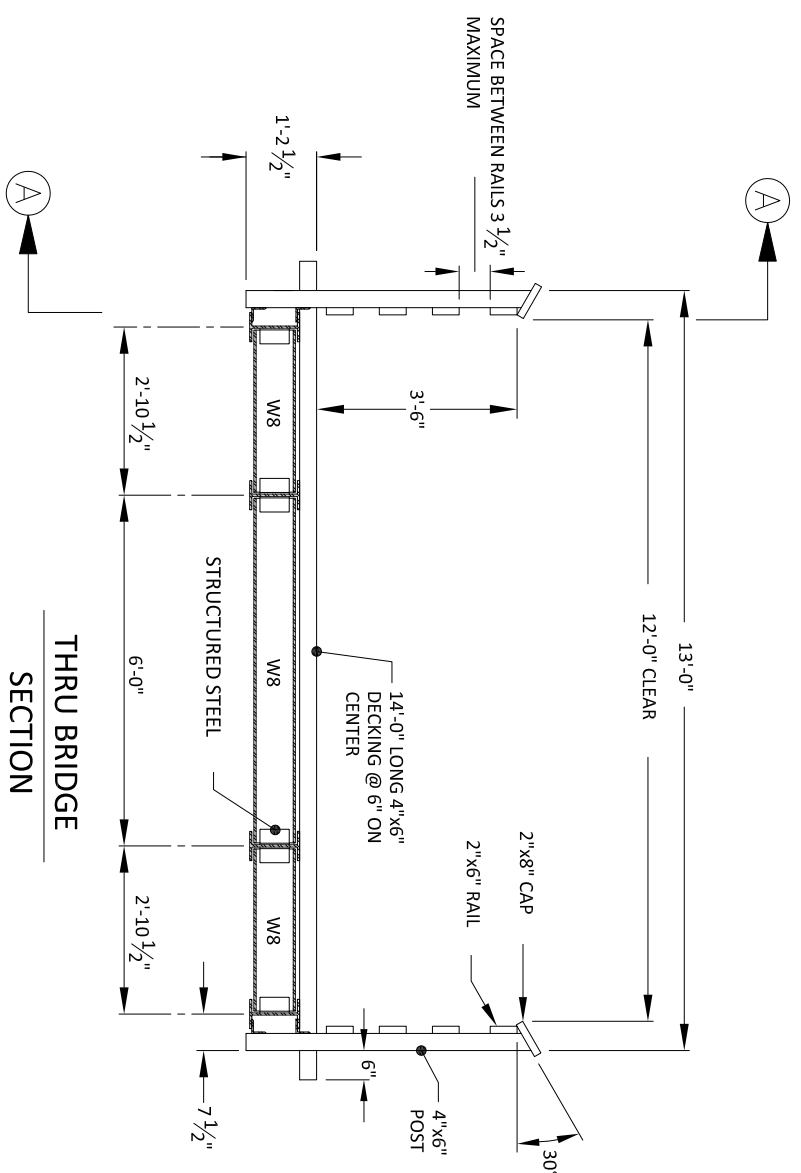


BRIDGE POST/RAIL
SECTION A-A



THRU BRIDGE
SECTION

BRIDGE SPECIFICATIONS:

A) DESIGN LOADS:

I. THE BRIDGE SHALL BE DESIGNED FOR AN EVENLY DISTRIBUTED LOAD OF 85 POUNDS PER SQUARE FOOT AS REQUIRED BY AASHTO STANDARD SPECIFICATIONS FOR HIGHWAY BRIDGES, 16TH EDITION, AND A CONCENTRATED LOAD OF 20,000 POUNDS AT MID-SPAN. THE DESIGN OF THE LAMINATED LUMBER BRIDGE COMPONENTS SHALL BE IN ACCORDANCE WITH THE "AMERICAN INSTITUTE OF TIMBER CONSTRUCTION", "AITC 117-2001", OR LATEST EDITION.

II. THE TOTAL BRIDGE DEAD LOAD APPLIED TO THE END BENT SHALL NOT EXCEED 37,000 POUNDS.

B) REFER TO ADDITIONAL WRITTEN SPECIFICATIONS.

DETAIL NOT TO SCALE



STEEL BEAM AND WOOD BRIDGE

PARKS AND GREENWAYS

Detail PG-16

Town of Hope Mills, North Carolina

February 28, 2015 Original