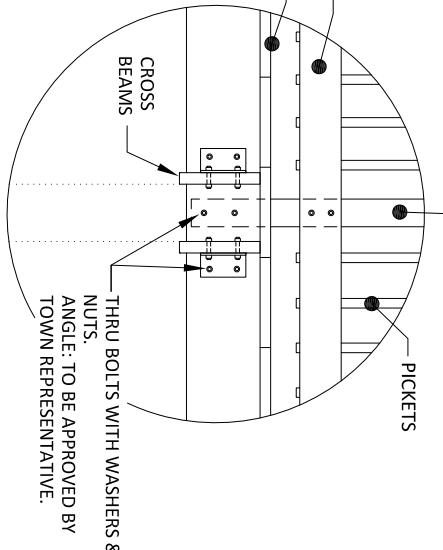


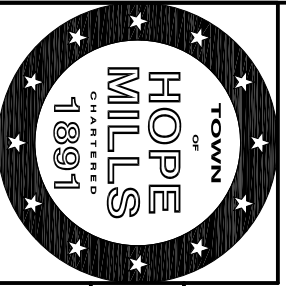
ELEVATION VIEW

- NOTES:**
1. INTERIOR SPANS ARE 8'-6" AND END SPANS ASSOCIATED WITH ABUTMENTS ARE 8'-2 1/4".
 2. FOR PLAN AND SECTION VIEWS, SEE PG-11.

INSET (INTERIOR VIEW)



DETAIL NOT TO SCALE



STANDARD BOARDWALK (ELEVATION VIEW)

PARKS AND GREENWAYS

Detail PG-10

Town of Hope Mills, North Carolina

February 28, 2015 Original