

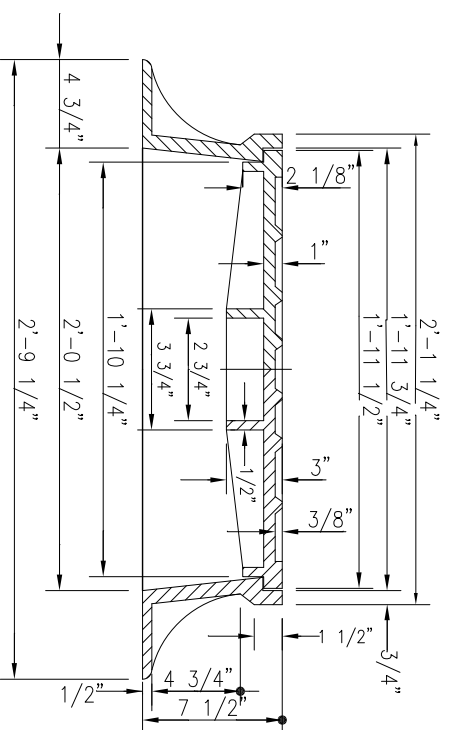
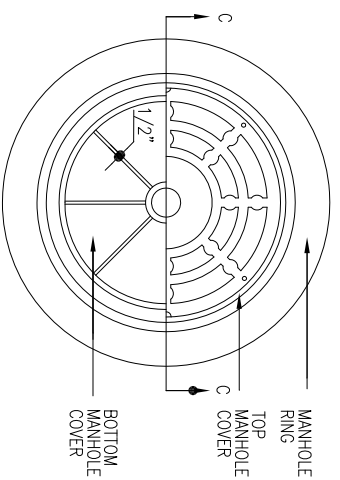
SPECIFICATIONS

1. MANHOLE RING AND COVER TO BE MADE OF GRAY CAST IRON CONFORMING TO ASTM SPECIFICATIONS A 48-74, CLASS 30. ALL CASTINGS SHALL CONFORM TO THE SHAPE AND DIMENSIONS SHOWN. THEY SHALL BE CLEAN AND PERFECT WITHOUT BLOW OR SANDHOLES OR DEFECTS OF ANY KIND, TENDING TO IMPAIR THEIR STRENGTH. NO PLUGGING OR STOPPING OF DEFECTIVE HOLES WILL BE PERMITTED.
2. CASTINGS SHALL BE DIPPED WHILE IN HOT COAL TAR.
3. MANHOLE RING AND COVER TO WITHSTAND VEHICULAR TRAFFIC WITHOUT OBJECTIONABLE NOISE.
4. MINIMUM AVERAGE WEIGHT:

FRAME: 180 LBS
 COVER: 120 LBS
 DEWEY BROS., INC.-MH-RCR- 2001
 OR APPROVED EQUAL

DETAIL NOT TO SCALE

TOP OF MANHOLE



SECTION C - C

STANDARD MANHOLE RING AND COVER
 ADOPTED FROM NCDOT
 STANDARD NO. 840.54

MANHOLE RING AND COVER

STORM DRAINAGE

Detail SW-13

Town of Hope Mills, North Carolina

February 28, 2015 Original

